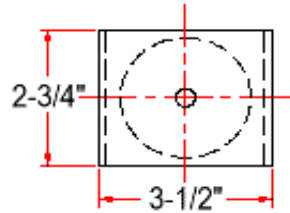
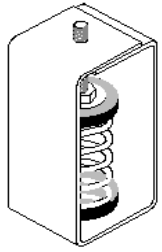


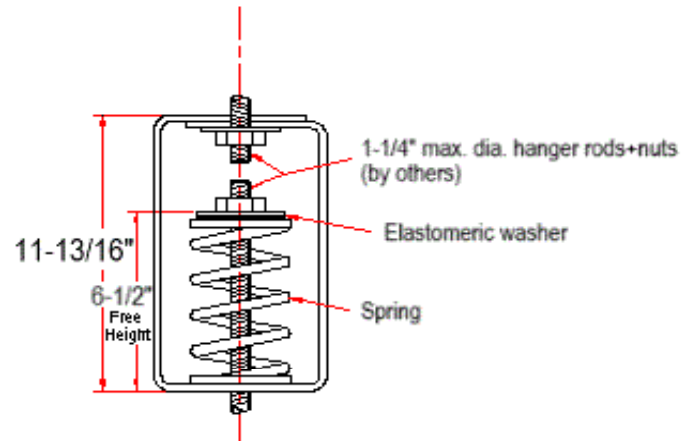
VIBRATION MANAGEMENT CORPORATION

5930 THOMAS ROAD , HOUSTON , TEXAS 77041 , U.S.A

INTERNET ADDRESS: www.vimco.biz



Not applicable with booster springs



N.T.S.

NOTES

1. Springs have 50% additional travel to solid beyond rated load.
2. Isolators should be selected in the range of -30% to +25% of rated load.
3. Consult spring chart for isolator performance data.
4. Nuts, washers & rods by others.
5. Contact factory for optional drilling to accept larger hanger rod sizes.

ISOLATOR MODEL	RATED LOAD (lbs)	SOLID LOAD (lbs)
HSJ-181	86	130
HSJ-182	133	200
HSJ-183	180	270
HSJ-184	266	400
HSJ-185	486	730
HSJ-186	713	1070
HSJ-187	926	1390
HSJ-181-199	593	890
HSJ-182-199	633	950
HSJ-183-199	683	1025
HSJ-184-199	783	1175
HSJ-185-199	933	1400
HSJ-186-199	1233	1850
HSJ-187-199	1460	2190

* 1" max rod size for models with booster spring 199

FEATURES

- * Spring elements color-coded for easy field verification
- * High deflection, low natural frequency
- * Load distribution steel washer

Notes / Remarks :

Project :
Client :
Consultant :
Representative :

Title :

HSJ
Spring Hanger
(3" deflection)

Drawing no.
S-2100.32

Rev. 0