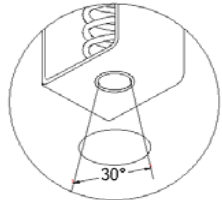
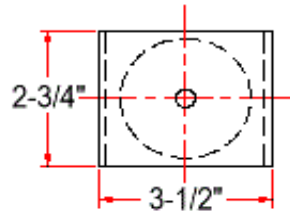
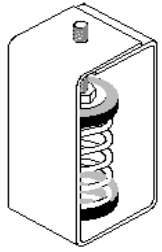


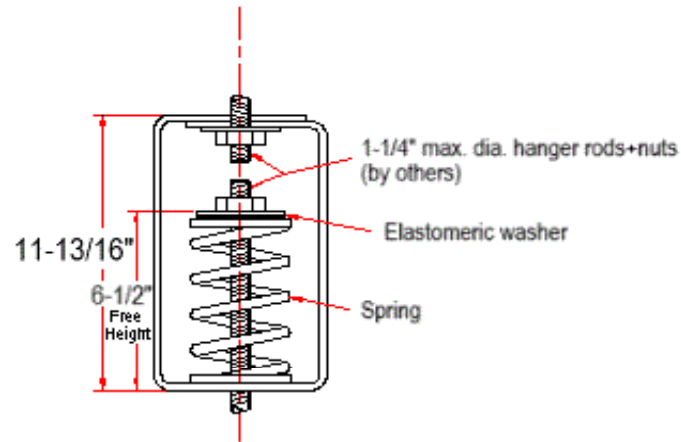
VIBRATION MANAGEMENT CORPORATION

5930 THOMAS ROAD , HOUSTON , TEXAS 77041 , U.S.A

INTERNET ADDRESS: www.vimco.biz



Not applicable with booster springs



N.T.S.

NOTES

1. Springs have 50% additional travel to solid beyond rated load.
2. Isolators should be selected in the range of -30% to +25% of rated load.
3. Consult spring chart for isolator performance data.
4. Nuts, washers & rods by others.
5. Contact factory for optional drilling to accept larger hanger rod sizes.

ISOLATOR MODEL	RATED LOAD (lbs)	SOLID LOAD (lbs)
HSJ-201	60	90
HSJ-202	100	150
HSJ-203	150	225
HSJ-204	250	375
HSJ-205	400	600
HSJ-206	700	1050
HSJ-207	926	1390
HSJ-201-219	593	890
HSJ-202-219	633	950
HSJ-203-219	683	1025
HSJ-204-219	783	1175
HSJ-205-219	933	1400
HSJ-206-219	1233	1850
HSJ-207-219	1460	2190

* 1" max rod size for models with booster spring 219

FEATURES

- * Spring elements color-coded for easy field verification
- * High deflection, low natural frequency
- * Load distribution steel washer

Notes / Remarks :

Project :
Client :
Consultant :
Representative :

Title :

HSJ
Spring Hanger
(2" deflection)

Drawing no.
S-2100.13

Rev. 0