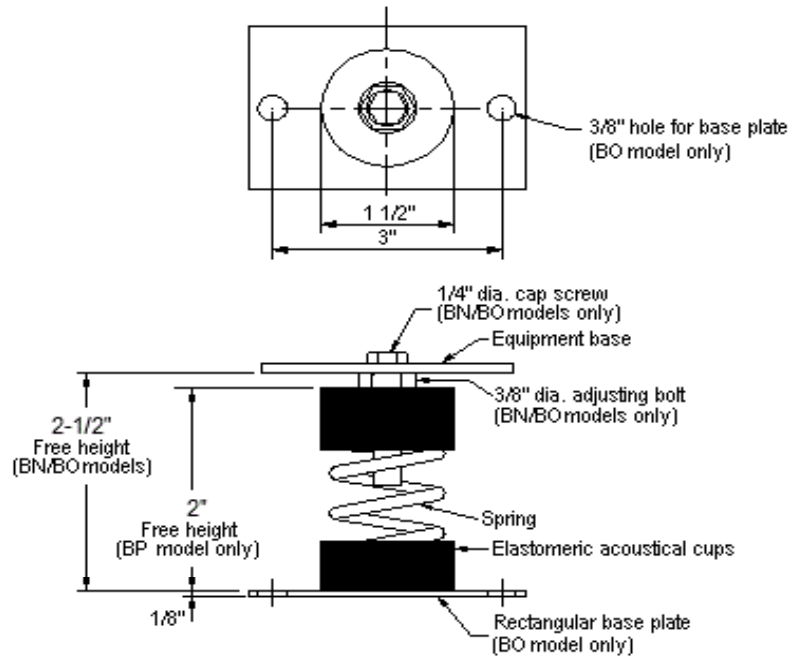
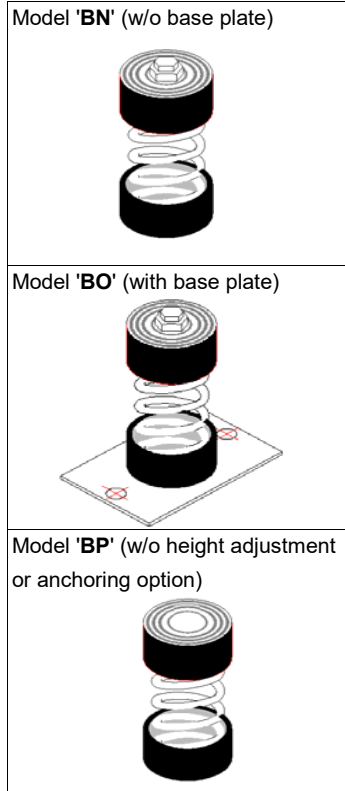


VIBRATION MANAGEMENT CORPORATION

5930 THOMAS ROAD , HOUSTON , TEXAS 77041 , U.S.A

INTERNET ADDRESS: www.vimco.biz



N.T.S

ISOLATOR MODEL	RATED LOAD (lbs)	SOLID LOAD (lbs)
Bx-021	20	30
Bx-022	44	66
Bx-023	70	105
Bx-024	100	150

x Choose appropriate isolator model: BN,BO,BP using mounting style diagrams on left.

FEATURES

- * Large diameter laterally stable springs
- * Weld-free construction
- * Anti-skid elastomeric acoustical cup
- * Built-in leveling device
- * Spring elements color-coded for easy field verification

NOTES

1. Isolators have a min. operating Kx/Ky ratio of 1.0
2. Springs have 50% additional travel to solid beyond rated load.
3. Isolators should be selected in the range of -30% to +25% of rated load.
4. Consult spring chart for isolator performance data.

Notes / Remarks :

Project :
Client :
Consultant :
Representative :

Title :

BN / BO / BP
Free-standing Spring Mount
Rubber Cup Construction
(0.75" deflection)

Drawing no.

S-2025.31

Rev. 0