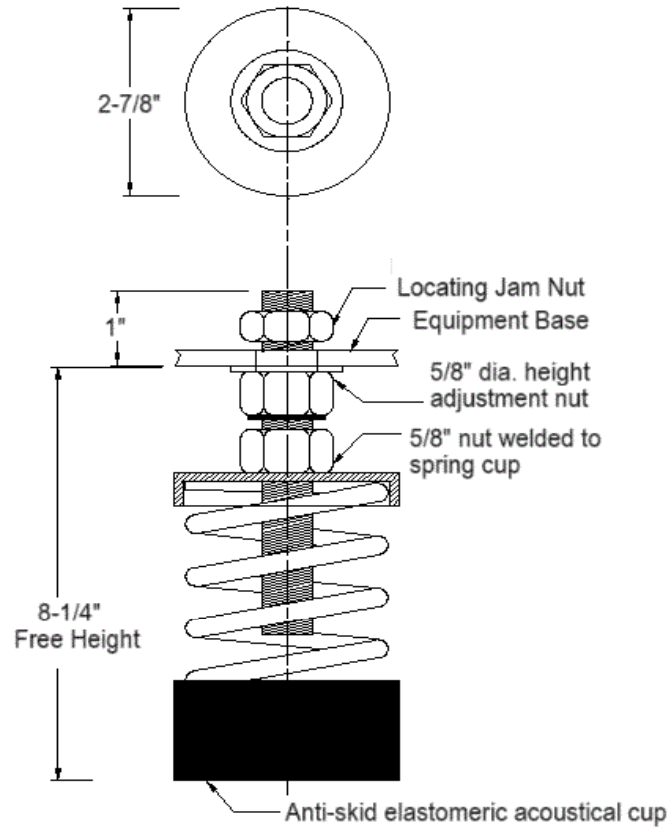


# VIBRATION MANAGEMENT CORPORATION

5930 THOMAS ROAD , HOUSTON , TEXAS 77041 , U.S.A

INTERNET ADDRESS: [www.vimco.biz](http://www.vimco.biz)



## NOTES

1. Springs have 50% additional travel to solid beyond rated load.
2. Isolators should be selected in the range of -30% to +25% of rated load.
3. Consult spring chart for isolator performance data.

ISOLATOR MODEL	RATED LOAD (lbs)	SOLID LOAD (lbs)
BY-181	86	130
BY-182	133	200
BY-183	180	270
BY-184	266	400
BY-185	486	730
BY-186	713	1070
BY-187	926	1390
BY-181-199	593	890
BY-182-199	633	950
BY-183-199	683	1025
BY-184-199	783	1175
BY-185-199	933	1400
BY-186-199	1233	1850
BY-187-199	1460	2190

## FEATURES

- \* Large diameter laterally stable springs
- \* Weld-free construction
- \* Anti-skid elastomeric acoustical cup
- \* Built-in leveling device
- \* Center mounting hole furnished as standard
- \* High deflection, low natural frequency
- \* Spring elements color-coded for easy field verification

Notes / Remarks :

Project :  
Client :  
Consultant :  
Representative :

Title :

**BY**  
Free-standing Spring Mount  
Rubber Cup Construction  
(3" deflection)

Drawing no.

**S-2020.21**

Rev. 0