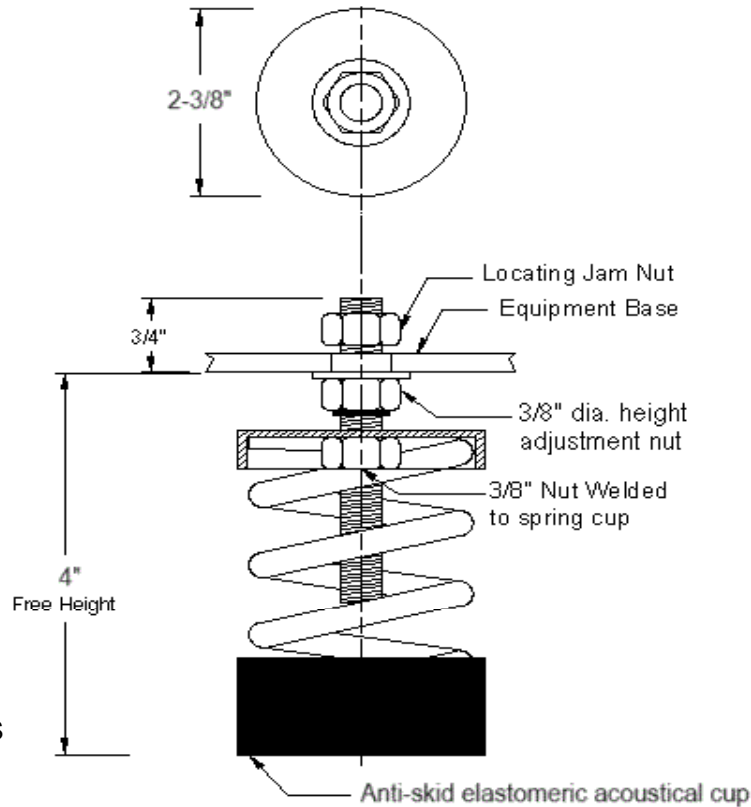
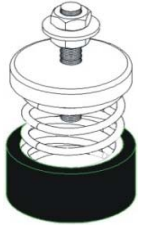


# VIBRATION MANAGEMENT CORPORATION

5930 THOMAS ROAD , HOUSTON , TEXAS 77041 , U.S.A

INTERNET ADDRESS: [www.vimco.biz](http://www.vimco.biz)



ISOLATOR MODEL	RATED LOAD (lbs)	SOLID LOAD (lbs)
BW-121	40	60
BW-122	66	100
BW-123	110	165
BW-124	173	260
BW-125	246	370
BW-126	300	450
BW-127	560	840

### FEATURES

- \* Large diameter laterally stable springs
- \* Weld-free construction
- \* Anti-skid elastomeric acoustical cup
- \* Built-in leveling device
- \* Center mounting hole furnished as standard
- \* Spring elements color-coded for easy field verification

### NOTES

1. Springs have 50% additional travel to solid beyond rated load.
2. Isolators should be selected in the range of -30% to +25% of rated load.
3. Consult spring chart for isolator performance data.

Notes / Remarks :

Project :  
Client :  
Consultant :  
Representative :

Title :

**BW**  
Free-standing Spring Mount  
Rubber Cup Construction  
(1" deflection)

Drawing no.

**S-2020.02**

Rev. 0