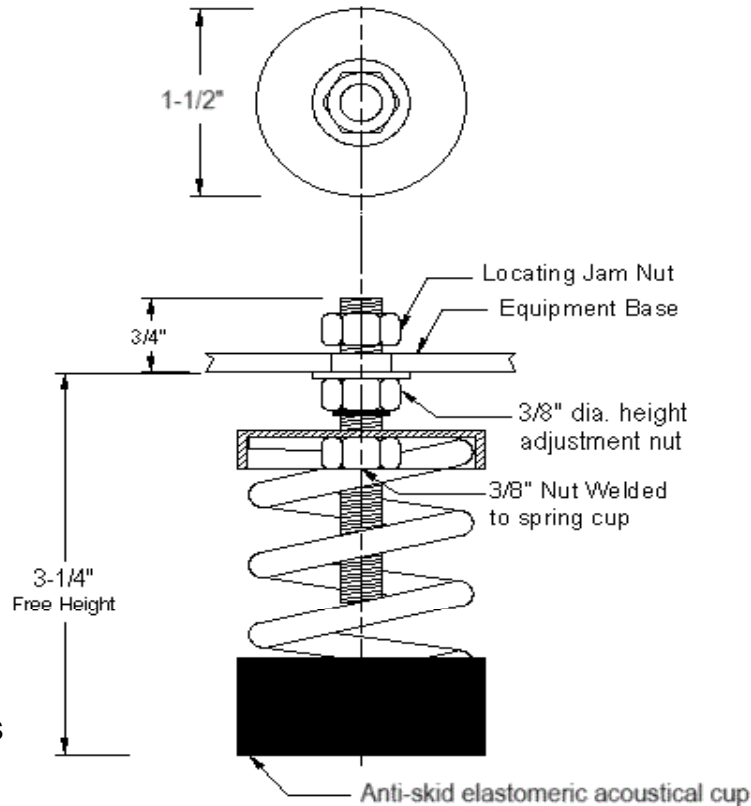


VIBRATION MANAGEMENT CORPORATION

5930 THOMAS ROAD , HOUSTON , TEXAS 77041 , U.S.A

INTERNET ADDRESS: www.vimco.biz



ISOLATOR MODEL	RATED LOAD (lbs)	SOLID LOAD (lbs)
BU-041	15	23
BU-042	33	50
BU-043	57	86
BU-044	76	115
BU-045	148	222

FEATURES

- * Large diameter laterally stable springs
- * Weld-free construction
- * Anti-skid elastomeric acoustical cup
- * Built-in leveling device
- * Center mounting hole furnished as standard
- * Spring elements color-coded for easy field verification

NOTES

1. Springs have 50% additional travel to solid beyond rated load.
2. Isolators should be selected in the range of -30% to +25% of rated load.
3. Consult spring chart for isolator performance data.

Notes / Remarks :

Project :
Client :
Consultant :
Representative :

Title :

BU
Free-standing Spring Mount
Rubber Cup Construction
(1" deflection)

Drawing no.

S-2020.01

Rev. 0