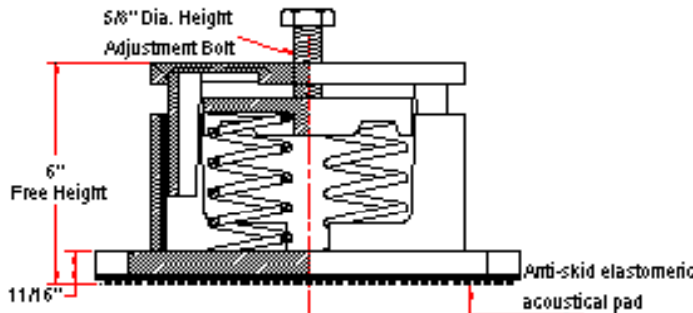
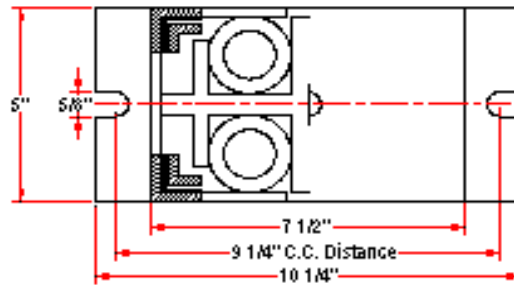
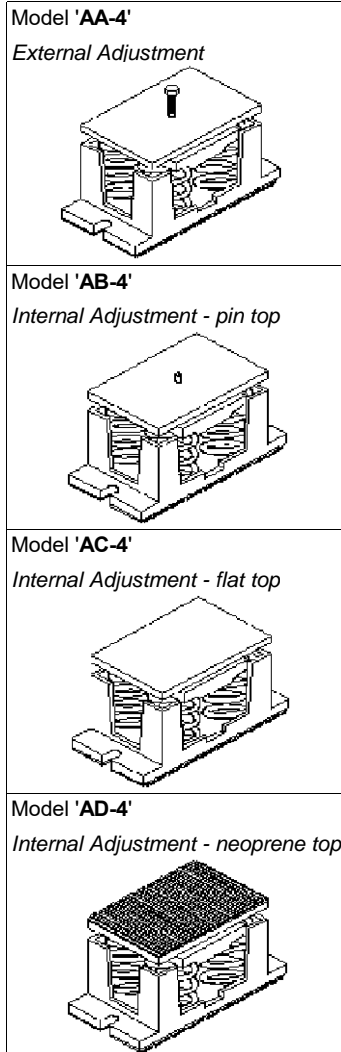


# VIBRATION MANAGEMENT CORPORATION

5930 THOMAS ROAD , HOUSTON , TEXAS 77041 , U.S.A

INTERNET ADDRESS: [www.vimco.biz](http://www.vimco.biz)



**NOTES**

- N.T.S.
1. Cast iron housings.
  2. Springs have 50% additional travel to solid beyond rated load
  3. Isolators should be selected in the range of -30% to +25% of rated load.
  4. Adjust mounting so that upper housing clears lower housing by at least 1/4" but not more than 1/2".
  5. Consult spring chart for isolator performance data.
  6. Free height indicated above is for AA-4 isolator. AB-4,AC-4 free height is 6-1/2". AD-4 free height is 6-3/4"

ISOLATOR MODEL	RATED LOAD (lbs)	SOLID LOAD (lbs)
Ax-4-101	224	340
Ax-4-102	304	460
Ax-4-103	452	680
Ax-4-104	600	900
Ax-4-105	864	1300
Ax-4-106	1200	1800
Ax-4-107	1600	2400
Ax-4-108	2000	3000
Ax-4-109	2400	3600
Ax-4-110	2932	4400
Ax-4-111	3464	5200
Ax-4-112	4000	6000
Ax-4-101-113	2028	3044
Ax-4-102-113	2104	3156
Ax-4-103-113	2216	3324
Ax-4-104-113	2328	3496
Ax-4-105-113	2588	3884
Ax-4-106-113	2864	4300
Ax-4-107-113	3200	4800
Ax-4-108-113	3684	5528
Ax-4-109-113	4264	6400
Ax-4-110-113	4424	6640
Ax-4-111-113	4960	7440
Ax-4-112-113	5864	8800

x Choose appropriate isolator model: AA,AB,AC,AD using mounting style diagrams on left.

**FEATURES**

- \* Resilient elastomeric snubbers to prevent metal to metal contact
- \* Anti-skid elastomeric acoustical pad
- \* Built-in leveling device
- \* Spring elements color-coded for easy field verification

Notes / Remarks :	Project :	Title : <b>AA-4 / AB-4 / AC-4 / AD-4</b> <b>Housed Spring Mount</b> <b>(1" deflection)</b>	Drawing no. <b>S-2000.04</b>
	Client :		
	Consultant :		
	Representative :		